



Nelson Primary School

Inspiring Ambition, Achieving Success

Newsletter

Issue 1 — Wednesday, 20 October 2021

190 days 100% Very best chance of success	183 days 96% Off to a flying start	179 days 94% Less chance of success	175 days 92% Harder to make progress	Over 18 days absence Less than 90% Persistent Absentee (Unfair to your child)
--	---------------------------------------	--	---	--

Dear Parents and Carers,

It has been so lovely to return to some sort of normality this term. Thank you all for your support during the past two years and throughout this term.

We will be saying goodbye to Gerry Clarke, one of our Teaching Assistants today. She has worked at Nelson for 14 years and she is now off to a different school. I hope you will join me in thanking her for all her hard work and support she has given so many children over the years.

We are working very hard with the children to ensure that they are catching up with the learning that has been lost during the covid period. We have been given some extra funding to support your children with this. If your child is given some extra tuition either before or after school please make sure that they attend every session.

During half term please take advantage of all the activities on offer at the library, the park and other places (see attached flyers) – participation in extra-curricular activities can positively impact on attainment, increase a pupil's positive identification with school, and build self-confidence and resilience.

Have a great half term.

Fiona Cullen

Attendance percentages for last week

Reception	78.5%
Year 1	90.2%
Year 2	88.1%
Year 3	93.2%
Year 4	91%
Year 5	92.8%
Year 6	90.8%

Attendance

At Nelson Primary School we place great importance on good attendance and punctuality.

We know that a child's attendance has a direct impact on their learning. Those children who are regularly absent from school and regularly late do not achieve their potential and do fall behind in class. Please support the school in this by ensuring that your child attends school regularly and arrives ready to learn and on time at 8.40am.

Attendance matters! It is important that your child gets to school on time and aims for 100% attendance!

Visit of Minister Wendy Morton MP

We are very excited that the Minister from the Foreign, Commonwealth and Development Office and the High Commissioner from the Kenyan embassy will be visiting our school tomorrow.

We are very proud to be able to showcase our Senior Choir and all our Global Learning work. The Minister will also hear about our partnership with the British Council and together with our House Captains will be having a live link with schools in Kenya and the Kenyan Education minister.

This is a great honour for our school; please talk to your child about the day.

Reminder

School will be closed from Monday 25th October 2021 to Monday 1st November 2021

Children need to return to school on Tuesday 2nd November 2021

All our holiday dates are published on the website:

www.nelson.newham.sch.uk



Wraparound Care

The children have been having a lot of fun at ESP. They have been decorating cakes and biscuits, as well as making pumpkin soup. Yummy. If you are interested in sending your child to our before and afterschool clubs, please contact the school. Please check the website for information on the services that we provide.

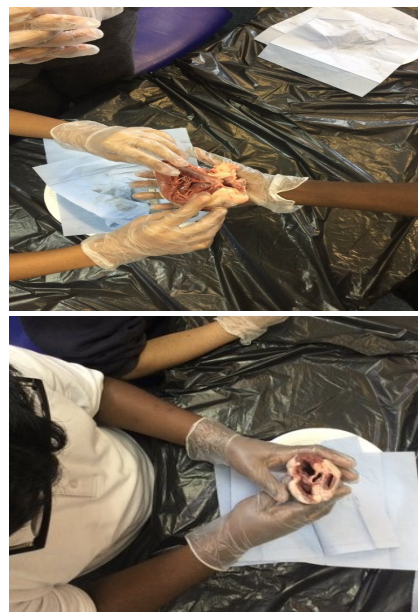


RECENT EVENTS

Our Year 6 children thoroughly enjoyed their visit to The Centre of the Cell in Whitechapel.



Our Year 6 learnt all about the heart during their dissection lesson in science.



Our Black History Celebration Lunch on Thursday 7th October 21 was a huge success. The children enjoyed themselves so much and the food was DELICIOUS!!

Thanks to all of generous and kind families for donating so much food for our harvest festival. All donations were delivered to the food bank



Types of Absence

Every half-day absence from school, by law, has to be classified as either authorised or unauthorised. This is why information about the cause of absence is always asked for.

Authorised Absences

These are mornings or afternoons away from school for a valid reason such as illness, emergency medical or dental appointments (routine appointments should always be made out of school hours) and emergencies.

Unauthorised Absences

An absence is classified as Unauthorised if the reason was not recognised as acceptable. The Department for Education (DfE) and Local Education Authorities provide information for schools as to what is acceptable and what is not.

Examples of reasons that would not be accepted:

- A birthday
- A shopping trip
- Day trips
- Holidays as exceptional circumstances

Contact the school office on the first morning of absence and notify us of the absence and provide a reason. Messages can be left in home language by phoning the school and then pressing 1 to access the answer phone.

If school does not receive a notification on the morning of day one, a text message will be sent asking you to contact the school. If school has not received a response we will phone, if there is still no response then we will carry out a home visit on day two.

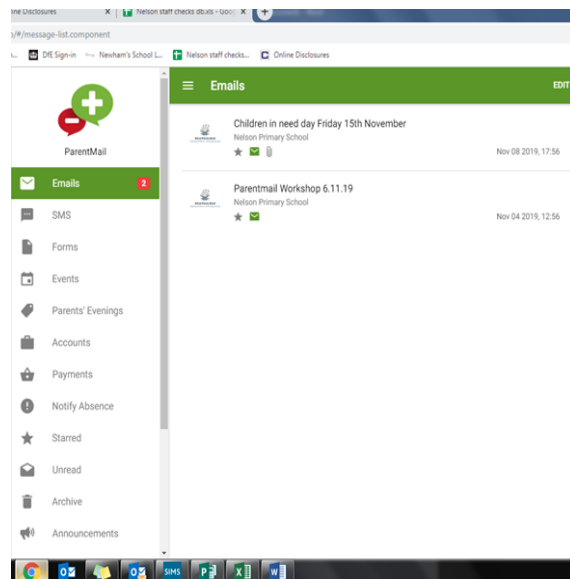
Notices

As the weather is changing, please make sure your child has a coat to wear at playtime and lunchtimes. It is very important that all the children have their name written inside.

We have a great deal of lost property in the school. We will be putting it out onto a table on Friday after school. Please come and claim your child's clothing or take clothing to replace lost clothing. There are a number of very nice brand new coats that do not have names in them- please make sure that all your child's belongings have their name in it or it cannot be returned to the right owner. Any unclaimed items will be disposed of during the holidays

Reporting Absences

Please remember to notify the school if your child is absent. The easiest most convenient way is via Parentmail. Just login to your account and tap seventh icon on your left, and report your child's absence.



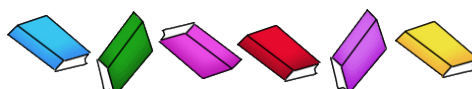
Be on time for school.

Just a reminder that the doors open at 8.40am please bring your child to school at that time. Too many of our children have been arriving after the doors close (at 8.50am) and are missing their reading time. They are then required to catch up that time at playtime. Children who are late for school have reported that it is embarrassing and that they don't like missing playtime.



Lost books

Please help your child to find their library books. After our last check there are 100 books missing from the library. It is important that they are returned as soon as possible so that other children can borrow them. If you really can't find them then you must pay your £4 to replace it via parent mail.



Dates for your diary

School terms	Pupil holidays
Autumn 1 Friday 3 rd September – Friday 22 nd October 2021	Half term Monday 25 th October – Friday 29 th October
Autumn 2 Tuesday 2 nd November – Friday 17 th December 2021	Training Days (School Closed) Monday 1 st November Christmas Break Monday 20 th December – Monday 3 rd January 2022 <i>Christmas Day and New Year's day fall in the Christmas Break</i>
Spring 1 Wednesday 5 th January – Friday 11 th February 2022	Training days (school closed) Tuesday 4 th January Half term Monday 14 th February – Friday 18 th February 2022 Staff Inset Monday 21 st February 2021
Spring 2 Monday 21 st February – Friday 1 st April 2022	Spring Break Monday 4 th April – Monday 18 th April 2022 <i>Good Friday and Easter Monday fall in the Spring Break</i>
Summer 1 Tuesday 19 th April – Friday 27 th May 2022	Half term Monday 30 th May – Friday 3 rd June 2022
Summer 2 Monday 6 th June – Friday 22 nd July 2022	Summer Break Monday 25 th July – tbc

Secondary School

If your child is in Year 6 then you must apply for a secondary school place before October 31st. This is very important. If you are late getting your online form in you may not get any of your choices of schools.

Apply now !!