

Name: _____ Date: _____

Parts of a Flower

Copy the functions of the parts of a flower in your best handwriting.

The stigma is on top of the carpel.

The style holds up the stigma.

The ovary contains the eggs.

The anther is at the top of the stamen.

The filament holds up the anther.

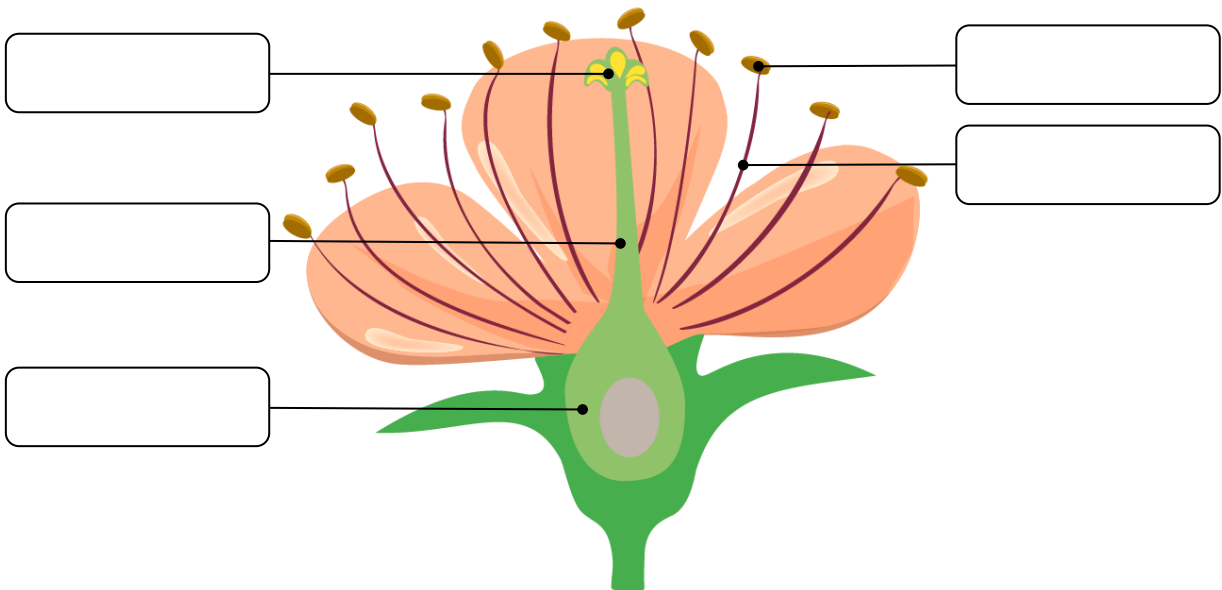
Label the parts of a flower using printed letters:

The carpel (female parts)

stigma style ovary

The stamens (male parts)

anther filament



Can you find out about pollination in flowering plants?